



25, HENDERSON
TERRACE, GOUROCK, PA19 1TT



 neillclerk
ESTATE AGENTS



Description

CLOSING DATE WEDNESDAY 16TH APRIL AT 12 NOON

This is a rare opportunity to purchase an immaculately presented two bedroom MID TERRACED VILLA. A particular feature is the recently refitted kitchen. Offers an ideal first time purchase or family home. Gardens extend to both the front and rear. The front garden features a lawned plot and paved patio with space for table & chairs. There is a generous sized enclosed rear garden with paved patio, lawned plot & decked area which provide excellent areas for relaxing with friends & family. A shed provides useful storage.

Specification includes: double glazing, gas central heating system & laminate flooring. The loft is accessed from the upper landing. The property lies close to local schooling, with transport facilities & amenities located nearby.

Impressive apartments comprise: Entrance Hallway by UPVC double glazed door. The bright dual aspect Lounge benefits from a front facing window and French doors leading to the rear garden. There is a marble fireplace with living flame gas fire. There is a quality refitted Kitchen with olive fitted units, grained style work surfaces and matching splashback. Appliances include: chimney extractor hood, gas hob, electric oven, integrated microwave, dishwasher, washing machine & fridge/freezer. There is a rear facing window and UPVC double glazed door giving access to the garden.

Stairs lead to the Upper Landing. There are two double sized Bedrooms. Bedroom 1 features a bank of mirrored wardrobes and additional inbuilt cupboard. The rear facing 2nd bedroom offers views beyond properties towards the River Clyde and the Lyle Hill in the distance. The refitted Bathroom with rear window feature a three piece suite comprising: vanity wash hand basin set within white high gloss unit, wc and bath with chrome style shower. Further benefits include: chrome style heated towel rail, wet wall panelling and decorative panelled ceiling.

Immediate viewing is essential. EPC =D

Measurements

Hallway

Lounge

3.18m x 5.54m (10'5 x 18'2)

Kitchen

2.41m x 3.48m (7'11 x 11'5)

Upper Landing

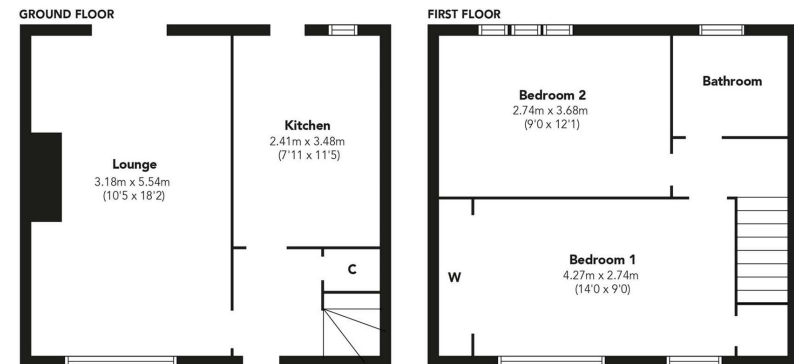
Bedroom 1

4.27m x 2.74m (14'0 x 9'0)

Bedroom 2

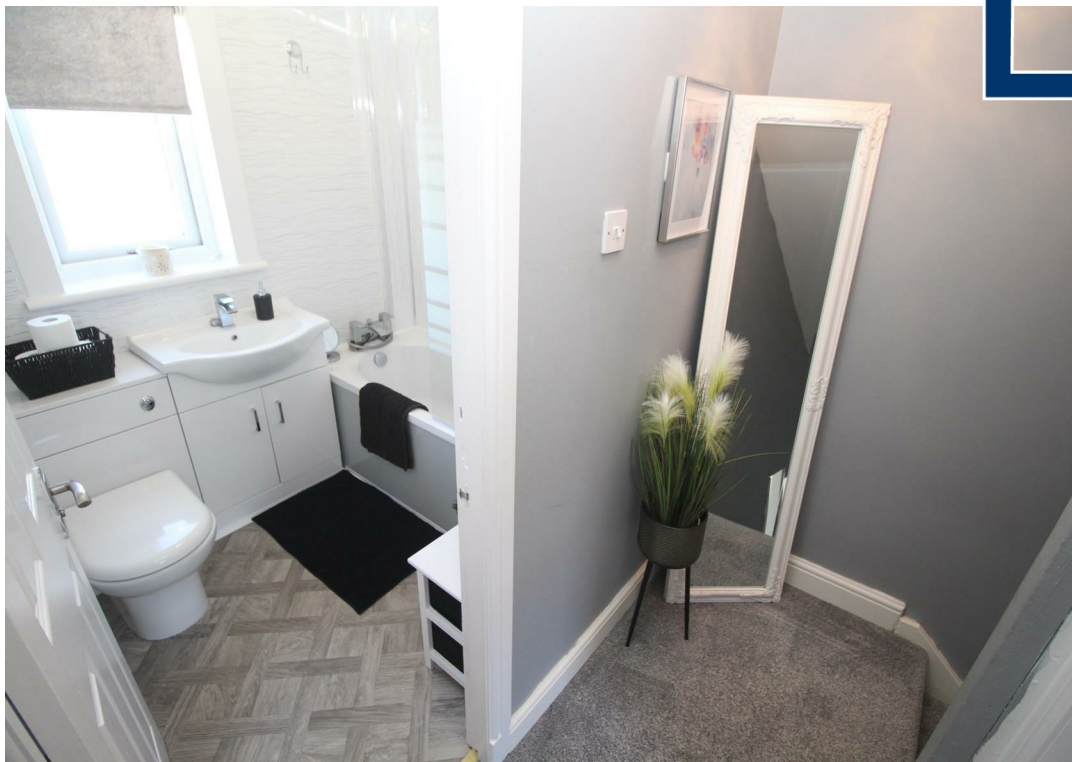
2.74m x 3.68m (9'0 x 12'1)

Bathroom



Floorplans are indicative only - not to scale
Produced by Plushplans 











The
next
step..



To view call 01475 888400. Speak to us 7 days a week until 11pm every day to book your viewing appointment.

House to sell or rent?

Call 01475 888400 to book your free market appraisal.

Require a solicitor?

Ask us to supply a free legal quotation from Neill Clerk & Murray, Solicitors.
www.neillclerkmurray.co.uk

Stay fully up-to-date by following Neill Clerk on:



**60 West Blackhall Street
Greenock
Renfrewshire
PA15 1UY**

t: 01475 888400

e: sales@neillclerk.co.uk

w: www.neillclerk.co.uk



Agents Notes:

These sales particulars are set out as a general outline only, issued in good faith, but do not constitute representations of fact and do not form part of any offer or contract. Any services, equipment, appliances, fittings or central heating systems have not been tested and no warranty is given or implied that these are in working order. All measurements are approximate and for guidance only.

Neither Neill Clerk Estate Agents nor any of its employees or agents has any authority to make or give any representation or warranty whatever in relation to this property.

Find all our properties at: [rightmove](https://www.rightmove.co.uk) [Zoopla](https://www.zoopla.co.uk) [onTheMarket.com](https://www.onthemarket.com) [s1homes.com](https://www.s1homes.com)